



Offset Reamer Driver – Open shown



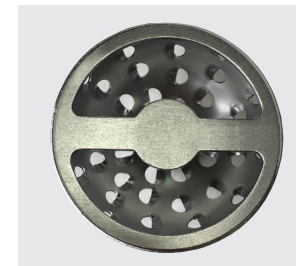
CROSSBAR

OPEN

- Connects to crossbar reamers
- Connects in incision or on back table
- Forward reaming only.



CROSSBAR



BRIDGEBACK

LOCKING

- Connects to crossbar and bridgeback reamers
- Connects on back table
- Forward and reverse reaming.

Offset Reamer Drivers

